



ROPE INNOVATION



Yachting

MOORING AND ANCHORING
CLASSIC
CRUISING
SAILING DINGHIES
RACING
SPlicing AND SAIL-MAKING



The French leader in the yachting rope market

With over 170 years of experience, including 5 decades in nautical rope manufacturing, Cousin Trestec is a major player on the leisure yachting market.

The key factors of this achievement are a unique expertise associated with a wide range of top performance products and a highly efficient distribution network.

Professional sports partnerships with high level navigators and top racing teams have contributed to the Cousin Trestec brand's notoriety, well beyond the yachting universe.

Expertise & innovation

The perfect mastery of all fabrication processes (integrated twisting and stretching station, splicing workshop...), combined with the best impregnation treatments (anti-static, water-repellent, anti-chaffing...), make Cousin Trestec one of the major players in the "Made in France" rope industry.

In order to provide its high-performance rope range, Cousin-Trestec applies very high technical standards and quality control processes.



Since 1848

Key figures

- 30 000 Km of ropes manufactured every year
- 500 braiding machines
- 170 years of experience
- 60 countries supplied worldwide





Contents

Mooring and anchoring

POLYAMIDE ROPES 3 STRAND	6
POLYESTER ROPES 3 STRAND	7
SQUARELINE POLYAMIDE 8 STRAND	8
FUTUNA POLYAMIDE	9
FLASHLINE POLYPROPYLENE	10
FLATLINE POLYESTER	10
BLACK PEARL POLYESTER	11
LEADED ANCHOR ROPE	12
LEADED GROUND LINE BRAIDED	12

Classic

3 STRANDS POLYPROPYLENE ROP	14
BRAIDLINE	15

Cruising

PACIFIC	17
BRAIDLINE	18
EQUINOXE	19
RAFALE	20
MERIDIAN	21

Sailing dinghies

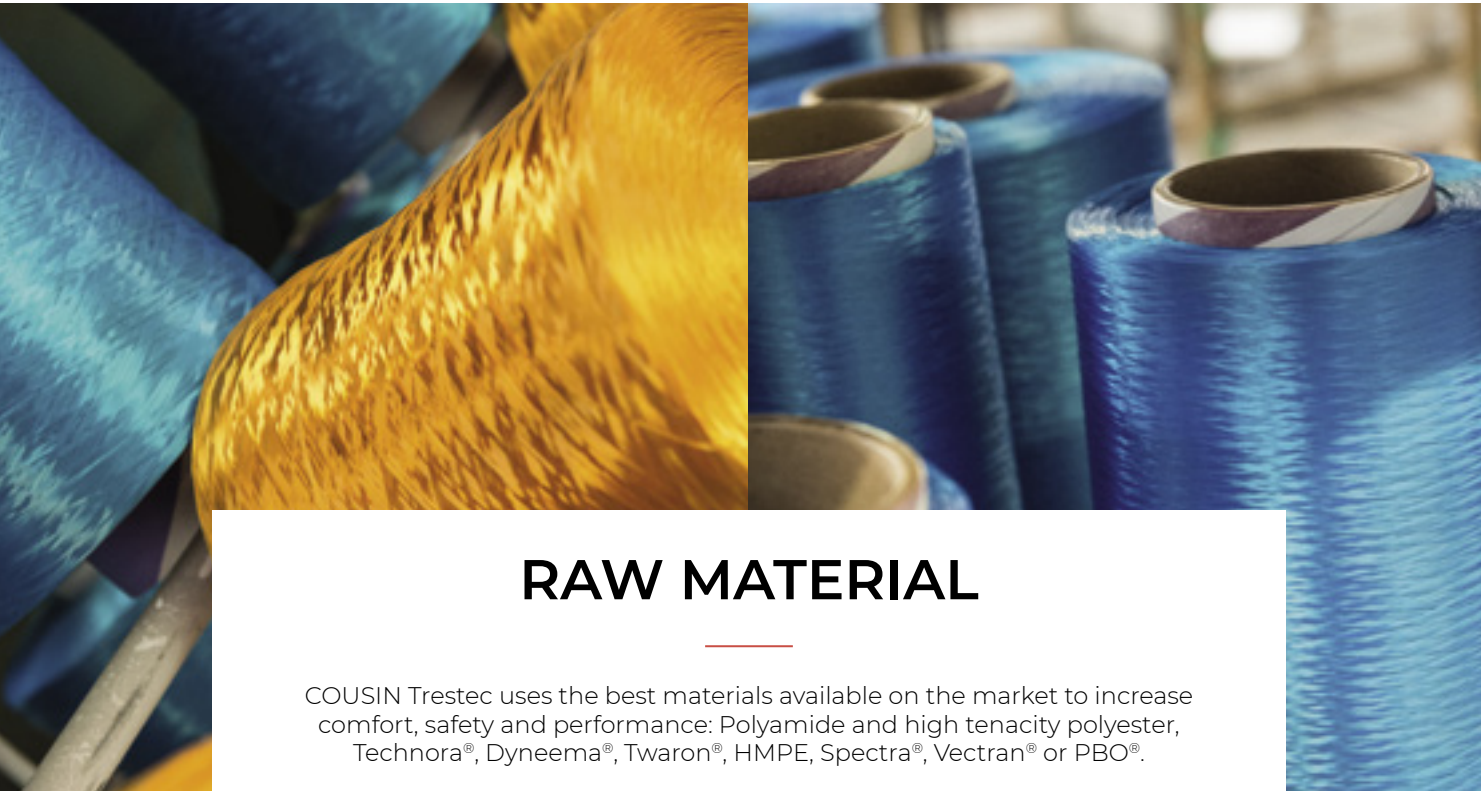
CHALLENGE	23
969	23
LIGHT COLOUR	24
SIROCCO	24

Racing

DYNASTY PRO SK78 MIXED COVER	
Technora® - Polyester	26
DYNASTY PRO SK78 POLYESTER COVER	27
DYNEESTAR	28
TRIBAL	29
DYNAPRO	29
DYNALIGHT HMPE	30
DYNALIGHT PRO SK78	31
ARAMSTAR	32
ALL BLACK	33
KING ROPE	34

Splicing and Sailmaking

966	36
POLYAMIDE BRAID	36
MINI SPOOLS	37
HMPE LOOP / SOFT SHACKLE	38
SOFT SNAP SHACKLE	38
SOFT SHACKLE KIT	38
DYNEEMA COVER®	39
WHIPPING TWINE	40
TOPLINE ULTIMATE	40
SEWING TWINE MINI-SPOOLS	41
POLYAMIDE GUARD RAIL NET	41
CONSTRUCTOR	42
RIGGING WORKSHOP	44
MOORING AND ANCHORING	45



RAW MATERIAL

COUSIN Trestec uses the best materials available on the market to increase comfort, safety and performance: Polyamide and high tenacity polyester, Technora®, Dyneema®, Twaron®, HMPE, Spectra®, Vectran® or PBO®.

MAIN CHARACTERISTICS OF OUR SYNTHETIC FIBRES

	Polyamide 6 / 6.6/11 (PA)	Polyester (PES)	Polypropylene (PP)	Polyethylene High modulus (HMPE)	Liquid crystal polyester (LCP)	Aramid	PBO	Steel
Brands	Nylon			Dyneema® Spectra® Others	Vectran	Twaron® Technora® Kevlar®	Zylon®	
Acids	Sensitive	Sensitive to high rate	No effect	No effect	Good resistance	Good resistance	Good resistance	Low resistance
Alkaline	No effect to low rate	Sensitive to high rate	No effect if low concentration	No effect	Very good resistance	Good resistance	Very good resistance	Low resistance
UV	Good resistance	Very good resistance	Low resistance	Very good resistance	Good resistance	Low resistance	Very low resistance	Very good resistance
Working temperature limit °C approx.	140	170	80	70	200	350	500	650
Softening temperature °C approx.	180	220	150	120				720
Fusion temperature °C approx.	220 (PA) 6 260° (Nylon) 6.6	260	170	150	330	Carbonises at around 500°C	Carbonises at around 650°C	1600
Density	1.14	1.38	0.91	0.97	1.39	1.44	1.56	7.86
Tenacity cN/Tex	60-80	60-85	55-65	320	240	195	400	20

Technical textile units:
Tex: number of g for 1000 m / dTex: number of g for 10.000 m / dTex /
Nm (number metric) daN: 1.02 Kg



Mooring & Anchoring



Mooring & Anchoring

POLYAMIDE ROPES 3 STRAND

Ref TN

The perfectly balanced construction of polyamide rope Ref TN 3 strand avoids kinking. Easy to splice, this rope is very soft and features high breaking strength.

Colours available



Ø mm	6	8	10	12	14	16	18
BL/breaking load daN	750	1 200	2 000	3 000	4 000	4 800	5 400
g/m	20	39	56	80	108	137	170

Ø mm	20	22	24	26	28	30	32
BL/breaking load daN	8 000	9 500	11 000	13 500	15 000	17 000	20 000
g/m	207	250	305	350	400	455	510

Available as a pre-spliced pack: Ø 8 mm, 10 mm, 12 mm and 14 mm. 30 m length. One spliced eye on a stainless steel thimble.

⊕ Advantages:

Besides its high elasticity and efficient shock absorption capacity, this rope does not float.

✓ Application:

Designed for docking, anchoring, mooring buoys and stoppers.

🔗 Construction:

3 strand high tenacity polyamide.



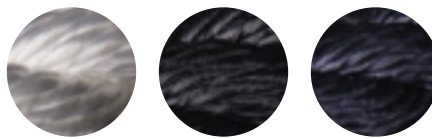
Mooring & Anchoring

POLYESTER ROPES 3 STRAND

Ref TRACTA

The polyester 3 strand rope shows excellent resistance to polluting and chemical products. With low elongation it ensures very good resistance to salt water and UVs.

Colours available



Ø mm	6	8	10	12	14	16	18
BL/breaking load daN	554	1 000	1 560	2 230	3 120	3 980	4 980
g/m	27	48	76	110	148	195	245

Ø mm	20	22	24	26	28	30	32
BL/breaking load daN	6 230	7 470	8 960	10 500	12 000	13 400	15 400
g/m	303	367	437	512	594	682	778

Also available in 12 mm, 14 mm and more. Length: 5 m, 7 m or 12 m. One spliced eye on a stainless steel thimble.

⊕ Advantages:

Always remains supple whatever the sea conditions.

✓ Application:

Multi-purpose: mooring, anchoring, gangway lines...

🔗 Construction:

3 strand high tenacity polyester.



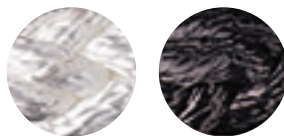
Mooring & Anchoring

SQUARELINE POLYAMIDE 8 STRAND

Ref 352

The 8 strand Squareline polyamide rope, Ref 352 offers high flexibility, softness, elasticity, and high breaking strength. Easy to splice on a chain, it does not kink, does not twist and is very comfortable to handle.

Colours available



Ø mm	14	16	18	20	24
BL/breaking load daN	4 020	5 200	6 570	8 140	11 800
g/m	122	158	200	245	355

Ø mm	28	32	36	40
BL/breaking load daN	15 500	19 600	24 400	29 400
g/m	485	630	800	990

⊕ Advantages:

Besides very good shock absorption, it also ensures easy handling.

✓ Application:

This high-end rope is ideal for mooring and anchoring applications. It can be used directly on the windlass.

🔗 Construction:

8 strand braided polyamide.



Mooring & Anchoring

FUTUNA POLYAMIDE

Ref 2414

Mooring Line Futuna Ref 2414 is very supple and provides great handling. Space-saving, it is easy to coil and very comfortable to handle.

Colours available



Ø mm	10	12	14	16	18
BL/breaking load daN	2 700	3 800	5 300	6 300	7 800
g/m	64	91	124	160	197

Ø mm	20	24	28	32
BL/breaking load daN	10 000	12 450	17 645	21 565
g/m	248	357	512	652

⊕ Advantages:

Chafe and wear resistant cover. Efficient and easy to splice.

✓ Application:

For Dynamic mooring lines which do not necessarily require shock absorbers.

🔗 Construction:

Polyester double braid, 24 plaits.



Mooring & Anchoring

FLASHLINE POLYPROPYLENE

Ref 669

The Flashline rope Ref 669 is very supple. Practical, it floats.

Colours available



Ø mm	8	10
BL/breaking load daN	550	850
g/m	23	30

⊕ Advantages:

Highly visible on the water surface.

✓ Application:

Ideal as life buoy lines and towing lines for small boats (dinghies...).

🔗 Construction:

16 plait braid made of multi-filament polypropylene.



Mooring & Anchoring

FLATLINE POLYESTER

Ref 625

Flatline rope Ref 625 features great suppleness and is space saving.

Colours available



Ø mm	10	12	14	16	18
BL/breaking load daN	2 000	2 800	3 200	5 100	6 400
g/m	46	66	87	113	140

⊕ Advantages:

Easy to splice.

✓ Application:

This rope is perfect for mooring lines, anchor lines, lashing or protection sleeve.

🔗 Construction:

24 plait high tenacity polyester braid.



Mooring & Anchoring

BLACK PEARL POLYESTER

Ref 1283

Highly supple, lightweight and very comfortable to handle dock line.
Hollow braid, made of high tenacity black polyester.

Colour: black only



Ø mm	10	12	14
BL/breaking load daN	2 500	3 300	4 500
g/m	70	93	125

Ø mm	16	18	20
BL/breaking load daN	5 400	6 000	7 900
g/m	153	168	200

⊕ Advantages:

Significant elongation under working load, enabling it to be used even in choppy harbours. Spliced loop, very easy to make.

✓ Application:

Dock line or anchor line.

🔗 Construction:

12 plait hollow braid made of high tenacity polyester.

Standard packaging:

Reel: 100 m and 200 m. Also available as a complete dock line, with a Ø 40 cm spliced eye on one extremity. Length 5m, 7m, 12 metres.



Mooring & Anchoring

LEADED ANCHOR ROPE

Ref 605

The leaded anchor line features a leaded chain on its entire length. It is the most reliable leaded line on the market, thanks to its double braid and the pre-spliced reinforced loop.

Colour available



Ø mm	10	12	14	16
BL/breaking load daN	1 600	2 000	2 700	4 200
Weight/Bag/Kg	5,6	9,4	12,7	18,3

+ Advantages:

Softness and comfortable handling, easy storage guaranteed.

✓ Application:

Complies with regulations for light weight anchors.

🔗 Construction:

Polyester cover over a core with a leaded chain along the entire length.

Packaging:

Comes in its specific bag.
 - Ø 10 mm: bag with 30 m
 - Ø 12 mm: bag with 35 m
 - Ø 14 mm: bag with 40 m
 - Ø 16 mm: bag with 50 m

Mooring & Anchoring

LEADED GROUND LINE BRAIDED

Ref 605

The braided leaded ground line facilitates mooring manoeuvring and chain hauling in harbour.

Colour available



Ø mm	8
BL/breaking load daN	385
g/m	215

🔗 Construction:

Polyester cover, Ø 8 mm, leaded core.



Classic



Classic

3 STRAND POLYPROPYLENE ROPE

Ref TRADITIONAL

UV treated and very comfortable handling, polypropylene classic rope
3 Strand rope Ref «Hemp aspect», traditional hemp appearance.

Colour available



Ø mm	4	6	8	10	12	14	16	18
BL/breaking load daN	195	485	845	1 255	1 790	2 460	3 085	3 925
g/m	6	17	30	45	66	90	116	148

Ø mm	20	22	24	26	28	30	32
BL/breaking load daN	4 735	5 735	6 705	7 805	8 910	10 145	11 295
g/m	180	220	260	310	355	410	460

⊕ **Advantages:**

This rope is rot-proof and abrasion resistant.

✓ **Application:**

Ropes for classic boats but also for rigging and decoration.

🔗 **Construction:**

3 strand multi-filament polypropylene



Classic

BRAIDLINE

Ref 961

Braidline rope Ref 961 is the universal multi-purpose rope.

Colour available



Ø mm	6	8	10	12	14	16	18
BL/breaking load daN	800	1 450	2 100	2 900	4 400	5 900	7 800
g/m	24	47	74	106	136	179	237

Ø mm	20	22	24	26	28	30	32
BL/breaking load daN	8 600	11 400	14 200	16 500	18 800	21 600	24 500
g/m	300	358	444	518	591	689	769

⊕ **Advantages:**

Very supple, it is comfortable to handle, ensures excellent resistance to abrasion and easy splicing.

✓ **Application:**

Sheet, halyard, downhauls, topping lift.

🔗 **Construction:**

Double braid. Polyester core and cover.



Cruising



Cruising
PACIFIC
 Ref 735

Very comfortable handling (cotton-like), very soft.
 High breaking load. Good holding in clutches.

Colours available



Ø mm	6	8	10
BL/breaking load daN	800	1 150	1 900
g/m	26	39	61

Ø mm	12	14	16
BL/breaking load daN	2 500	3 200	4 100
g/m	85	117	159

⊕ **Advantages:**

Exceptional and comfortable handling, flexibility.

✓ **Application:**

High-end sheets for sailing dinghies and cruising boats: jib, mainsail, spinnaker, traveller control.

🔗 **Construction:**

24 plait polyester spun fibre braided cover. 3 strand twisted polyester core.



Cruising
BRAIDLINE
 Ref 961

Braidline rope Ref 961 is the universal multi-purpose rope.

Colours available



Ø mm	6	8	10	12	14	16	18
BL/breaking load daN	800	1 450	2 100	2 900	4 400	5 900	7 800
g/m	24	47	74	106	136	179	237

Ø mm	20	22	24	26	28	30	32
BL/breaking load daN	8 600	11 400	14 200	16 500	18 800	21 600	24 500
g/m	300	358	444	518	591	689	769

⊕ **Advantages:**

Very supple, it is comfortable to handle, ensures excellent resistance to abrasion and easy splicing.

✓ **Application:**

Sheet, halyard, downhauls, topping lift.

🔗 **Construction:**

Double braid. Braided polyester core and cover.



Cruising
EQUINOXE
 Ref 790

High-end Equinoxe halyard Ref 790 ensures excellent handling with great suppleness.

Colours available



Ø mm	6	8	10
BL/breaking load daN	1 200	2 000	2 700
g/m	31	52	72

Ø mm	12	14
BL/breaking load daN	3 500	4 700
g/m	109	154

⊕ **Advantages:**

Ensures high breaking strength and excellent holding in clutches.

✓ **Application:**

Downhaul, topping lift, halyard tails.

🔗 **Construction:**

32 plait polyester braided cover. 3 strand twisted polyester core.



Cruising

RAFALE

Ref 750

Rafale, Ref 750 is a high performance halyard for cruising. It features excellent holding in clutches and is perfectly stable under load.

Colours available



Ø mm	6	8	10
BL/breaking load daN	1 000	1 200	1 950
g/m	29	44	70

Ø mm	12	14
BL/breaking load daN	2 750	3 500
g/m	106	151

⊕ **Advantages:**

High breaking strength and low elongation.

✓ **Application:**

Downhauls, topping lift, reefing lines...

🔗 **Construction:**

16 plait polyester braided cover. Thermo-treated polyester core with parallel fibres.



Cruising

MERIDIAN

Ref 793

High performance halyard.
Good density, for a better fit on winches and clutches.

Colours available



Ø mm	6	8	10	12
BL/breaking load daN	1 100	1 900	3 000	4 200
g/m	33	56	86	119

Ø mm	14	16	18
BL/breaking load daN	5 500	7 200	8 600
g/m	153	204	256

⊕ **Advantages:**

Easy to splice, great stability under load.

✓ **Application:**

Halyard, sheet, downhaul, reefing line.

🔗 **Construction:**

12 plaits braided core under a 32 plaits cover. Component: high tenacity polyester.



ROPE INNOVATION



Sailing dinghies



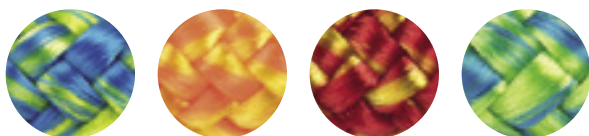
Sailing dinghies

CHALLENGE

Ref 577

Challenge rope Ref 577 ensures high resistance to abrasion.

Colours available



Ø mm	4	5	6
BL/breaking load daN	350	500	700
g/m	12	20	24

⊕ **Advantages:**

Wide choice of colours to differentiate ropes and functions.

✓ **Application:**

Multi-purpose halyard: Backstay block and tackle, downhaul, halyards. Fine tuning lines for regattas on sailing dinghies.

🔗 **Construction:**

Polyester braided cover. Polyester parallel cores.



Sailing dinghies

969

Ref 969

Rope Ref 969 is a pre-stretched halyard, stiff but supple enough when handling in cams.

Colours available



Ø mm	3	4	5	6	8
BL/breaking load daN	250	400	550	800	1 150
g/m	7	11	18	29	45

⊕ **Advantages:**

Excellent resistance to chafe and low elongation.

✓ **Application:**

Multi-purpose control lines, dinghies and windsurfers.

🔗 **Construction:**

16 plait, pearlescent, polyester braided cover. Polyester parallel yarn cores.



Sailing dinghies LIGHT COLOUR

Ref 712

Light Color rope Ref 712 is very lightweight and highly supple.

Colours available



Ø mm	2	3	4	5
BL/breaking load daN	45	120	170	300
g/m	1,7	4,3	7	11

Ø mm	6	8	10
BL/breaking load daN	400	750	1 000
g/m	16	28	43

⊕ **Advantages:**
Outstanding floatability.

✓ **Application:**
Halyards and sheets for all applications: spinnaker light-sheet, safety lines, light-sheet.

🔗 **Construction:**
16 plaits braided multifilament polypropylene cover, pearlescent. High tenacity polypropylene parallel cores.



Sailing dinghies SIROCCO

Ref 781

Sirocco, Ref 781 is a dense yet supple halyard.

Colours available



Ø mm	3	4	5	6	8
BL/breaking load daN	400	750	900	1 050	1 700
g/m	7	11	15	25	48

⊕ **Advantages:**
High resistance in cleats and perfect global stability under load.

✓ **Application:**
Multi-purpose control lines, dinghies and sport-boats halyards, block and tackle, downhauls. Control lines for regattas on sailing dinghies.

🔗 **Construction:**
16 plaits polyester braided cover. Technora® parallel cores.



ROPE INNOVATION

Racing



Racing

DYNASTY PRO SK78 MIXED COVER Technora® - Polyester

Ref 612

The Dynasty Pro polyester cover stands out for its exceptional hold in clutches and winches. Its polyurethane coated core allows easy unsheathing.

Colours available



Ø mm	6	8	10
BL/breaking load daN	2 600	4 300	6 700
g/m	30	50	77

Ø mm	12	14	16
BL/breaking load daN	8 800	11 500	15 500
g/m	101	137	190

⊕ Advantages:

Exceptional handling in clutches.

✓ Application:

Race boat halyards and sheets. Ultra-efficient on the most aggressive winches. Exceptional handling in clutches.

🔑 Construction:

Highly pre-stretched Pro SK78 Dynalight core with a polyurethane coating under a compact 24 plaits braided cover in black Technora® / colour polyester. Also available in Dynalight Pro SK99 core.



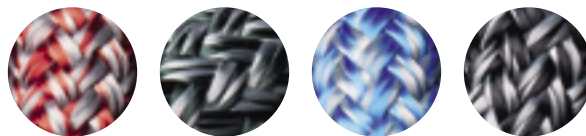
Racing

DYNASTY PRO SK78 POLYESTER COVER

Ref 613

The Dynasty Pro polyester cover stands out for its exceptional hold in clutches and winches. Its polyurethane coated core allows easy unsheathing.

Colours available



Ø mm	6	8	10
BL/breaking load daN	2 600	4 300	6 700
g/m	30	50	77

Ø mm	12	14	16
BL/breaking load daN	8 800	11 500	15 500
g/m	101	137	190

⊕ Advantages:

Perfectly stable, it is a high performance halyard.

✓ Application:

Ideal for halyards and sheets for racing.

🔑 Construction:

Highly pre-stretched SK78 Dynalight core with a polyurethane coating under a 24 plaits braided cover in colour polyester fibers.

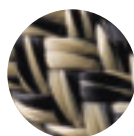


Racing DYNEESTAR

Ref 605

Lightweight and free running, this halyard shows excellent resistance to abrasion with low elongation.

Colours available



Only available
in Ø 8 mm
and 10 mm.



Ø mm	3	4	5	6	8
BL/breaking load daN	400	600	900	2 100	4 000
g/m	8	10	15	26	43

Ø mm	10	12	14	16	18
BL/breaking load daN	4 500	6 200	9 500	10 500	14 500
g/m	63	91	119	147	197

+ Advantages:

The internal cover and the core work together to ensure exceptional stability and lifespan.

✓ Application:

Ideal for all leisure sailors looking for ultimate performance with high-end sheets and halyards.

🔑 Construction:

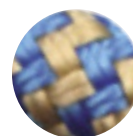
External 24 plait polyester cover. HMPE fibre loosely woven, braided core (high modulus polyethylene).

Racing ARAMADILLO

Ref 2275

Built on the same technical basis as the Dyneestar, Aramadillo has a reinforced sheath, mixed polyester / Technora® aramid.

Colours available



Ø mm	8	10	12
BL/breaking load daN	3500	4500	6200
g/m	43	63	91

Ø mm	14	16	18
R/rupture daN	9500	10500	14500
g/m	125	160	205

+ Advantages:

Intermediate braid and mixed aramid sheath for better grip on the winch, especially under shocks in strong breezes. Longevity and flexibility.

✓ Application:

Mainsheet, jibs or spinnaker sheets ideal for regatta use, fluid, high performance and stable under heavy load.

🔑 Construction:

24 plaits braided polyester and Technora® mixed sheath, textured polyester middle sheath, HMPE long-woven braided core.



Racing
TRIBAL
Ref 7510

Tribal rope, Ref 7510 is a unique sheet featuring exceptional handling.

Colours available



Ø mm	6	8	10
BL/breaking load daN	900	1 600	2 200
g/m	12	26	42

⊕ **Advantages:**

Very light and supple use.

✓ **Application:**

Mainsheet, jibs, spinnaker sheets for sailing dinghies, sport catamarans, day-boats.

🔗 **Construction:**

16 plait braid, made of a blend of HMPE (high modulus polyethylene) and spun dyed polyester.

Racing
DYNAPRO
Ref 1611

Extremely lightweight, Dynapro rope Ref 1611 is hydrophobic. It allows easy manoeuvring.

Colours available



Ø mm	6	8	10
BL/breaking load daN	1 500	2 400	4 000
g/m	16	32	48

⊕ **Advantages:**

Perfectly suitable for light catamarans and other sailing dinghies.

✓ **Application:**

Mainsheet, jibs, spinnaker sheets for sailing dinghies, sport catamarans, day-boats.

🔗 **Construction:**

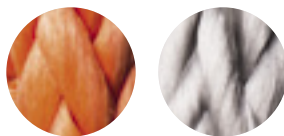
16 plait, high-tenacity multi-filament polypropylene cover. Braided HMPE (high modulus polyethylene) cover.



Racing
DYNALIGHT HMPE
 Ref 13

Dynalight halyard Ref 13 features high breaking strength comparable to steel. Very supple and very stable under load, it offers high resistance to fatigue, bending and abrasion.

Colours available



Ø mm	3	4	5	6	8	10	12
BL/breaking load daN	1 050	1 500	2 400	4 000	6 200	10 500	14 500
g/m	5	7	13	22	34	61	85

Ø mm	14	16	18	20	22	24	26
BL/breaking load daN	18 000	21 500	27 000	31 000	35 000	40 000	48 000
g/m	110	133	173	205	236	276	345

⊕ **Advantages:**
 Easy and quick to splice.

✓ **Application:**
 Heavy load handling, soft shackles, spinnaker guys or halyards. Equipped with an easily removable protection sleeve, recommended for use in cleats, on winches...

🔗 **Construction:**
 12 plait HMPE (High Modulus Polyethylene) or Dyneema® SK78 braid with polyurethane coating for protection against wear.



Racing

DYNALIGHT PRO SK78

Ref 1A

12 plait coated hollow braid made of Dyneema® SK78. Ideal as a replacement for steel cables, both for nautical activities and for industry. Perfectly stabilised rope thanks to a heat stretching process. High resistance.

Colour available



Ø mm	3	4	5	6	7	8	9	10	11	12
BL/breaking load daN	1 100	1 600	2 600	4 300	5 200	6 700	8 800	11 500	14 300	15 500
g/m	5	7	13	22	27	34	44	60	77	85

Ø mm	13	14	15	16	18	20	22	24	26
BL/breaking load daN	17 000	19 000	21 000	22 500	28 500	33 000	38 000	44 000	52 000
g/m	94	108	120	133	173	205	236	276	340

⊕ Advantages:

Low elongation under working load. Dimensional stability and exceptional lightness. Highly water repellent. Highly abrasion resistant.

✓ Application:

Forestays, shrouds, spinnaker guy, running backstays.

🔗 Construction:

12 plait, loosely woven hollow braid, 100% Dyneema® SK78, fully impregnated, heat-stretching treated and compacted. Also available in 100% Dyneema® SK99 fully coated, heat pre-stretching treated.



Racing
ARAMSTAR
 Ref 520

Aramstar halyard Ref 520 ensures reliability, stability and high performance, thanks to the use of aramid fibres in the core.

Colours available



Ø mm	6	8	10	12
BL/breaking load daN	1 900	3 000	5 600	7 900
g/m	28	44	80	112

Ø mm	14	16	18
BL/breaking load daN	10 200	13 100	15 200
g/m	154	190	224

⊕ **Advantages:**

High performance, reliability and stability.

✓ **Application:**

This halyard is used for racing and round the world records, as well as for ocean cruising: sail boats requiring mainsail halyards with reeving system like multihulls.

🔗 **Construction:**

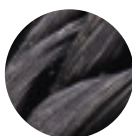
24 plait polyester braided cover. Braided Technora® core.



Racing
ALL BLACK
 Ref 18

All Black rope Ref 18 is the ideal solution for replacing a steel cable, with good UV resistance.

Colour available



Ø mm	3	4	5	6
BL/breaking load daN	1 000	1 600	2 500	2 900
g/m	7	12	18	21

Ø mm	8	10	12	14
BL/breaking load daN	5 100	7 800	12 000	16 000
g/m	37	57	83	115

⊕ **Advantages:**

Easy to splice, it guarantees no elongation whatsoever.

✓ **Application:**

Load distribution, strop, spinnaker guy, bobstay, and load points on sails. Over cover recommended.

🔗 **Construction:**

12 plait black Technora®, with polyurethane coating.



Racing KING ROPE

Ref 21

King Rope high-tech cable is of great compactness.
It stands out for its rigidity and its total stability under charge.

Colours available



Ø mm	3,9	6,3	7,7	8,7	10,8
BL/breaking load daN	1 250	3 100	4 800	6 400	9 200
g/m	12	30	45	60	90

Ø mm	12,5	16	17,5	22	25
BL/breaking load daN	12 000	17 400	19 400	29 400	39 200
g/m	124	180	235	345	473

⊕ Advantages:

Easy to splice, it is a good alternative to steel cable.

✓ Application:

Babystay, running backstays (over cover recommended).

🔑 Construction:

High tenacity Polyester, finely braided. Intermediate protective polyurethane film. Highly compact braided Technora® core.



ROPE INNOVATION

Splicing & Sailmaking



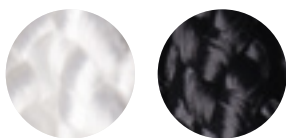
Splicing & Sailmaking

966

Ref 966

Braided rope
for various applications.

Colours available



Ø mm	2	2,5	3	4	5
BL/breaking load daN	100	130	230	400	600
g/m	2	3	6	10	16

Ø mm	6	8	10	12
BL/breaking load daN	750	1 100	1 600	2 000
g/m	21	37	64	85

+ Advantages:

Low elongation excellent resistance to uvs and chemicals.

✓ Application:

Multi-purpose, fixed messengers, various fixing, reefing lines...

🔧 Construction:

High tenacity 16 plait polyester halyard with polyester parallel fibre core.



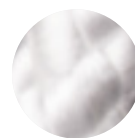
Splicing & Sailmaking

POLYAMIDE BRAID

Ref 4874

This polyamide braid, Ref 4874 ensures good resistance
as well as good stability.

Colour available



Ø mm	1,5	2	2,5	2,8	3
BL/breaking load daN	90	150	150	200	270
g/m	1,3	1,7	2,7	4	5

Ø mm	3,5	4	5	6	8
BL/breaking load daN	300	400	470	700	1 200
g/m	6,6	7,8	13	17	31

Ø mm	10	12	14	16
BL/breaking load daN	2 000	2 300	3 100	4 300
g/m	48	74	109	137

+ Advantages:

Multi-purpose.

🔧 Construction:

Polyamide pearlescent braid. 16-plait.

✓ Application:

Multi-purpose, fixed messengers, various fixing, reefing lines...



Splicing & Sailmaking

MINI SPOOLS

Mini spools are readily available, ready to use and essential on board.

MULTI-PURPOSE

CORDS / WHITE / NYLON

Ø mm	1	1,5	2	3	4
Spools	10 x 60 m	10 x 60 m	10 x 40 m	10 x 20 m	10 x 12 m

CORDS / COLOUR / FUN / NYLON

Ø mm	2	3	4
Spools	10 x 40 m	10 x 20 m	10 x 12 m

CORDS / LIGHT / POLYPROPYLENE

Ø mm	2	3	4
Spools	10 x 40 m	10 x 20 m	10 x 12 m

THE «DEDICATED»

CORD / COLOUR / HEMP / CLASSIC

Ø mm	3
Spools	10 x 20 m

CORDS / DYNALIGHT 100% DYNEMAA®

Ø mm	1,5	2	3	4
Spools	10 x 50 m	10 x 40 m	10 x 20 m	10 x 12 m

Mini spools usually come in a box of 10.



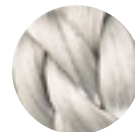
Matelotage & Voilerie

LAZY JACK POLYESTER BRAID

Ref 1650

Specially designed for use as Lazy Jack.

Colour available



Ø mm	4	6	8
BL/breaking load daN	480	1050	2250
g/m	8	20	35

⊕ Advantages:

Easy to splice (hollow braid), excellent resistance to UV, to the marine environment.

✓ Application:

Lazy Jack, various fixing.

🔗 Construction:

High tenacity polyester hollow braid 12 plaits.



Splicing & Sailmaking

HMPE LOOP / SOFT SHACKLE

This HMPE loop / soft shackle replaces steel shackles and carabiners. It is a significant weight saver, does not damage support surfaces (deck, mast, boom) and ensures that the block is always perfectly aligned with the strength axis.

Colour available



Ø mm	8	10
Usable length (bottom length of folded ring) / cm	15 - 30	15 - 30 - 50
SWL (Safe Working Load) / daN	980	1 470

+ Advantages:

Noiseless, excellent resistance to UV and chaffing, exceptional weight / resistance ratio.

✓ Application:

Alternative to shackles for connecting lines to travellers, toe-rails, booms and spars (bows-prits, poles...), connection of backstays and running backstays to block and tackles...

🔗 Construction:

100% HMPE (High Modulus Polyethylene) 32 plait braid.

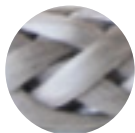


Splicing & Sailmaking

SOFT SNAP SHACKLE

The soft shackle is easy to open with its releasable end fitting. It provides significant weight saving, and is free from corrosion and noise.

Colour available



Ø mm	4,5	6	8	10	12	17
Usable length (bottom length of folded ring) / cm	10	15	15	20	25	30
SWL (Safe Working Load) / daN	220	320	500	700	1300	2000

+ Advantages:

Light weight, exceptional breaking strength.

✓ Application:

Alternative to steel shackles and carabiners. Our indicated SWL (Safe Working Load) is given with a safety factor of 5.

🔗 Construction:

100 % HMPE (High Modulus Polyethylene).



Matélotage & Volerie

SOFT SHACKLE KIT

Make your own soft shackles in a few minutes with this kit.

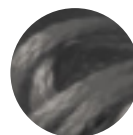
Colours available



red (3mm)



blue (4mm)



grey (5mm)

+ Advantages:

Light weight, practical and economical.

✓ Application:

The kit consists of 10 m of Dynalight and a splicing needle. Available in Ø 3 mm, Ø 4 mm and Ø 5 mm.

red (3 mm) blue (4 mm) grey (5 mm)



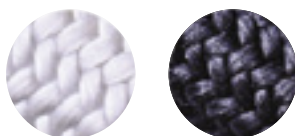
Splicing & Sailmaking

DYNEEMA® COVER

Ref 605

This Dyneema® sleeve is the best solution for abrasion resistance.

Colour available



Ø mm	6	8	10	12	14	16	18
BL/breaking load daN	1700	1900	2500	3700	4500	6000	8000
g/m	14	17	21	31	42	65	85

Ø mm Cover	6	8	10	12	14	16	18
Ø Rope with cover	6 & 8 mm	8 & 10 mm	10 to 14 mm	12 to 16 mm	14 to 18 mm	16 to 20 mm	18 to 22 mm

⊕ **Advantages:**

The best for resistance to abrasion.

✓ **Application:**

Protective sleeve on any lines used in racing and subject to chafe and abrasion.

🔗 **Construction:**

32 plait tubular braided Dyneema®.

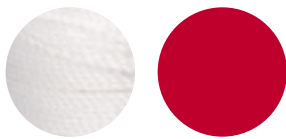


Splicing & Sailmaking

WIPPING TWINE

This whipping twine is lightly waxed for making whipping more easily with better holding.

Colours available



Ref	2006	2009	2012
Ø mm	0,9	1,2	1,6
Reel	70 m	50 m	35 m
BL/breaking load daN	22	35	47

 **Construction:**
High tenacity braided polyester thread.

Splicing & Sailmaking

TOPLINE ULTIMATE


Finely braided lines, pre-stretched and impregnated with a polyurethane coloured coating.


Colours available



Réf	12110	16175	12250	16350	12550
Construction	12 plaits	16 plaits	12 plaits	16 plaits	12 plaits
Ø mm	0,7	0,8	0,9	1,1	1,2
BL/breaking load daN	64	87	131	172	256
g/m	0,29	0,39	0,56	0,76	1,09

Réf	TLS 250	TLS 400	TLS 500
Construction	12 plaits	12 plaits	12 plaits
Ø mm	1,2	1,5	1,9
BL/breaking load daN	250	400	500
g/m	1	1,67	2,23

 **Advantages:**
High stability, high breaking strength, so elongation under load is minimal.

 **Composition:**
100% HMPE



Splicing & Sailmaking

SEWING TWINE MINI-SPOOLS

Snap system, removable plastic base to maintain the extremity of thread after use, for Nr 20/3 and 30/3.

Colour available



Ref	20/3	30/3
Comes on twine spools	200	300
BL/breaking load daN	6,8	4,7

⊕ Packaging:

Box of 10 mini-spools, for Nrs 20/3 and 30/3. A must-have in your repair kit. Also available as 250 g spools (8 in a box).

⊕ Advantages:

High resistance to heat while sewing, high breaking load.

✓ Application:

A must-have in your repair kit.

🔧 Construction:

High tenacity polyester bonded thread, specially for sail making.



Splicing & Sailmaking

NYLON NETTING FOR BULWARK PROTECTION

The polyamide guard rail net is a heat-treated polyamide net. It is easy to mount thanks to high and low borders.

Colour available



Net height	50 cm	60 cm
Density of yarn	640 m/kg	640 m/kg
BL/breaking load daN	88	88

⊕ Advantages:

This nylon net offers long-lasting resistance to weather conditions and UVs.

✓ Application:

Designed for guard rails.

🔧 Construction:

Net with knotted square mesh, side: 50 mm Height: 50 - 60 cm.

Splicing & Sailmaking

CONSTRUCTOR

A braided cover made of aramid Technora® fibre that tightens under load and blocks the rope instantly. The higher the tension, the stronger the hold. The rope is not pressed between two metallic parts as with conventional clutches: It is not distorted, worn or chafed. To release the rope, just retract the cover. Easy to release, even under high load.

Clutch size	BL/breaking load daN	Weight total g	Cover length cm
Constructor® 6	750 (Ø 6) / 450 (Ø 5)	155	55
Constructor® 8	1150 (Ø 8) / 700 (Ø 6)	160	60
Constructor® 10	2200 (Ø 10) / 1200 (Ø 8)	165	60
Constructor® 12	2800 (Ø 12) / 1500 (Ø 10)	335	75
Constructor® 14	3700 (Ø 14) / 1800 (Ø 12)	345	75

	Width mm	Length mm	Height mm	Entraxe min. mm	Entraxe max. mm	Ø Screws mm
Constructor® 6	25	115	45	70	90	8
Constructor® 8	25	115	45	70	90	8
Constructor® 10	25	115	45	70	90	8
Constructor® 12	36	126	58	70	90	10
Constructor® 14	36	126	58	70	90	10

+ Advantages:

Proven efficiency, by a factor of two compared to conventional clutches.
Extremely light: three times lighter than conventional clutches.
Gentle with rope (ropes last twice as long).
Easy release with the drawstring even under heavy load.

🔧 Construction:

CONSTRUCTOR® composition:
- An anodised aluminium metal base on which the sleeve is fixed.
- A specifically designed braided Black Technora® high tenacity sleeve.
- A braided Dyneema® draw string to remotely unlock the clutch under load.

✓ Presentation:

CONSTRUCTOR® is compatible with most of the existing ropes (except Dyneema®, Spectra® and similar covers).

We highly recommend using it with Cousin Trestec ropes.

INTEGRATED VERSION ALSO AVAILABLE

Three times lighter, twice the breaking load of conventional metal clutches, the Constrictor® soft clutch opens a new era for sailing deck hardware for racing and also cruising. Extremely simple and totally efficient, this system uses the principle of squeezing capacity offered by braided sleeves.



RIGGING WORKSHOP OUR TEXTILES SOLUTIONS

RUNNING RIGGING – STANDING RIGGING FOR RACE BOATS, SUPER YACHTS AND CLASSIC BOATS

With over 50 years of expertise, our rigging workshop is specialised in the conception of textile rigging solutions. Thanks to perfect knowledge of fibres and full mastery of the state-of-the-art splicing techniques, our workshop team is able to provide solutions to meet your needs (design, production, monitoring, consulting...) and offer high performance rigging.



FINISHING

- Spliced eyes
- Over covers
- Filament winding
- Leather finishing
- Loops
- Soft snap shackle

BEAUTIFUL FINISHES WITHOUT AFFECTING RESISTANCE

Our workshop team is composed of experimented riggers whose strong point is their expertise in splicing work with such precision that the rope keeps 100% of its breaking strength. We can perform customised splicing work on any rope diameter and for all types of boats, on request.

Our quality control department guarantees rope working loads, which are tested on our 100 ton traction bench.

MOORING AND ANCHORING

INSTRUCTION AND PRECAUTIONS FOR USERS

MOORING LINES

Boat length (Ft)	25	35	40	45	50	65	82	100	115	132
Boat length (m)	8	10	12	14	16	20	25	30	35	40
Displacement (tons)	1	2	5	12	20	25	30	40	70	80
	Ø mm									
Nobl cord - Futuna Polyamide								24	24	28
Futuna Polyamide	10	12	14	16	18	20	22	24		
Squareline, 8-strand, Polyamide	10	12	14	16	18	20	22	24	26	28
3-Strand rope Tracta polyester	10	12	14	16	18	20	22	24	26	28
Braided leaded rope Nr 706	10	12	14	16	16					
Black Pearl 12-Strand polyester	10-12	14	16	18						
3-Strand rope Polyamide TN	10	12	14	16	18	20	22	24	26	28
Polyester Flatline Black, 16-plaits	10-12	14	16	18						

THE VALUES SHOWN BELOW ARE INDICATIVE. TO BE CONFIRMED BY YOUR DISTRIBUTOR, RETAILER, ACCORDING TO THE SPECIFICATIONS OF YOUR BOATS.

WHEN SETTING YOUR DOCK LINES (4 LINES IN DIFFERENT POSITIONS), WE RECOMMEND ENSURING THAT THERE ARE NO SHARP ELEMENTS OR VERY ABRASIVE SURFACES.

- ✓ Be careful not to soak your dock lines with chemical products, gasoline or paint.
- ✓ Be careful, when setting up, to avoid twisting the dock lines excessively.
- ✓ Rinse off salt deposits regularly with fresh water.
- ✓ High pressure washing is strongly advised against (there is a risk of abrasive elements penetrating the synthetic fibres).
- ✓ Our high tenacity fiber ropes have good UV resistance, but it is advisable to limit sun exposure.

PLEASE NOTE

Given the significant elongation of ropes under high working loads, it is advised to keep away from the traction axis when the rope is under tension.

In case of rupture, a rope can back-lash violently and cause significant injuries or material damage due to the energy developed.

Cousin Trestec accepts no responsibility in case of misuse of its products.

Splicing instructions are available on our site: **www.cousin-trestec.com**

Splicing manual on request from your retailer.

GENERAL TERMS AND CONDITIONS OF SALES

SCOPE

These General Terms of Sale apply to all sales made by COUSIN TRESTEC.

ORDERS

Sales, including those negotiated by our agents or representatives, shall only be complete upon explicit written acceptance of Customer's order materialised by a return receipt.

TERMS OF PAYMENT

Our invoices are payable to WERVICQ-SUD, according to the indications on the invoice sent to the purchaser.

The time in which payment must be made starts to run on the shipping date from our plants or warehouses, or in case of deferred delivery requested by the purchaser, from the date that the goods are placed at the disposal of the purchaser.

NO DISCOUNT FOR PRE-PAYMENT IS GRANTED.

Non-payment of an invoice on its due date makes the payment of all other invoices due immediately, even if they have given rise to already circulated drafts; in this case, accepted bills will be returned in exchange of payment. Non-payment of an invoice gives COUSIN TRESTEC the ability, either to demand cash payment before shipment of any new merchandise, whatever the conditions of the order to which it relates either to postpone or cancel without compensation or notice period, all orders recorded by us in the name of the defaulter, and remaining to run.

Failing the payment of invoices on their due date, interest shall be charged at three times the legal interest rate in force, with a minimum of 3%.

Furthermore, a fixed compensation fee of 40,00 euro for administrative processing will be charged in conformity to the decree N° 2012 - 1115 of October 2nd, 2012 for any late payment exceeding 10 days.

Any expenses incurred in the purchaser's country not effectively foreseen upon conclusion of the contract, including taxes, duties and collection charges, are at the purchaser's expense. If, after conclusion of the contract, circumstances capable of casting doubt on the customer's solvency were to be brought to our knowledge, we reserve the right, according to our choice, to demand an advance payment or the provision of a guarantee.

If the agreed currency is not the euro, we reserve the right to cancel the part of the contract that has not yet been delivered if, in the seller's country, the exchange rate of the agreed currency devaluates by more than 3% (three percent) from its rate on the day the contract was concluded, for as long as such variation occurs.

TRANSPORT OF GOODS

Our goods are sold ex works or warehouse and always travel at the risks and perils of the addressee, whatever the terms of sale or mode of transport, notably in the case of carriage free shipping.

TITLE RETENTION CLAUSE

In case the purchaser defaults on payment of all or part of the order's price, COUSIN TRESTEC reserves, until complete payment, the property rights on the products sold, allowing it to recover possession of the said products. Any deposit paid by the acquirer shall be kept by COUSIN TRESTEC as compensation, without prejudice to any other related action that it may intent against the purchaser.

The transfer of the property of COUSIN TRESTEC products to the purchaser shall only take place after complete payment of the price thereof by the purchaser, whatever the delivery date of the said products.

On the other hand, the transfer of risks relating to loss and deterioration of the COUSIN TRESTEC products shall take place upon delivery and reception of the said products by the purchaser.

DELIVERY

All products or services will have to be delivered in accordance with the dates and places of delivery specified in the order accepted by COUSIN TRESTEC.

If COUSIN TRESTEC knows the company will not be able to comply with the dates and / or locations agreed: COUSIN TRESTEC shall notify the purchaser in writing as soon as possible, upon receipt of such notice the purchaser may give additional time under the conditions which seem appropriate.

If such an extension is not granted by the purchaser, and in that the delay are not due to the fault of the purchaser, the latter shall be entitled to claim a compensation of 2% of product prices not supplied by months of delay, without prejudice to the transport costs to Réunion Island of products delivered late.

COUSIN TRESTEC shall not be liable to the purchaser for any delays or non-deliveries arising from a case of force majeure, such as breaking of machines, strikes, epidemics, flooding, lack of raw materials, etc...

The purchaser is required to check the apparent condition of the products at the time of delivery. If the purchaser fails to issue specific reservations at the time of delivery, the products delivered by COUSIN TRESTEC shall be considered compliant with the order with respect to their quantity and quality. From the time of delivery and reception of the ordered products, the purchaser shall have a period of eight days in which to issue written reservations to COUSIN TRESTEC. No claim shall be validly accepted in case of non respect of these formalities by the purchaser. COUSIN TRESTEC shall replace as soon as possible and at its own expense any products delivered that are duly proven as being defective by the purchaser. The return of goods that were specially manufactured, or subject to dyeing or special processing, shall in no case be accepted.

PACKAGING AND P.O.S. ADVERTISING

Our packaging and P.O.S. advertising, even when deposited, constitute industrial equipment that remains our property and is exclusively reserved for the placing of our products. The deposit does not constitute a sale but represents the payment by our customers of a guarantee deposit that is reimbursed as soon as the equipment is returned to our plant, postage paid and in good condition.

SUPPLIER'S WARRANTY

In compliance with legal provisions, COUSIN TRESTEC guarantees the purchaser against any hidden flaws arising from a material, design or manufacturing fault affecting the products delivered and rendering them unfit for use. The guarantee is excluded in case of improper use, negligence or lack of care on the part of the purchaser, as in case of normal wear or force majeure. In order to assert his rights, the purchaser must, under penalty of forfeiture of any related action, inform COUSIN TRESTEC in writing of the existence of flaws within a maximum of ten days from discovery thereof. COUSIN TRESTEC shall replace or repair the products or parts under guarantee that are judged defective.

LIMITATION OF LIABILITY

COUSIN TRESTEC, except otherwise public order will not be responsible for the occurrence of any damage of any kind resulting directly or indirectly from the use, or from the inability to use the products, including:

- COUSIN TRESTEC will not be responsible for the occurrence of any indirect damage, such as in particular, decreased production, loss of profits;
- COUSIN TRESTEC will not be responsible for loss or destruction of any goods, damages, or expenses which directly or indirectly derived from the use, misuse or inability to use the products by the customer, and that of independently or in combination with another product, or for the business loss of any nature whatsoever and shall have no obligation to provide a replacement product;
- In any case the contractual liability of our company as it could be committed under this contract shall not exceed the amount paid by the customer for the purchase of products.

VENUE

All litigation arising from the purchasing or sales transactions considered by these General Terms of Sale shall be submitted to the Commercial Court of Paris; this is explicitly accepted by the purchaser.

APPLICABLE LAW

All the clauses contained in these General Terms of Sale, as well as all the purchasing or sales transactions considered therein, shall be governed by French law.



Following our policy of on-going improvement and technical development of the products we manufacture, we reserve the right to change or modify any product features described in this catalogue without notice. Furthermore, this document is a non-binding document and is published subject to errors or omissions.

COUSIN TRESTEC | 8 rue de l'Abbé Bonpain | 59117 WERVICQ-SUD | France
www.cousin-trestec | contact@cousin-trestec.com