

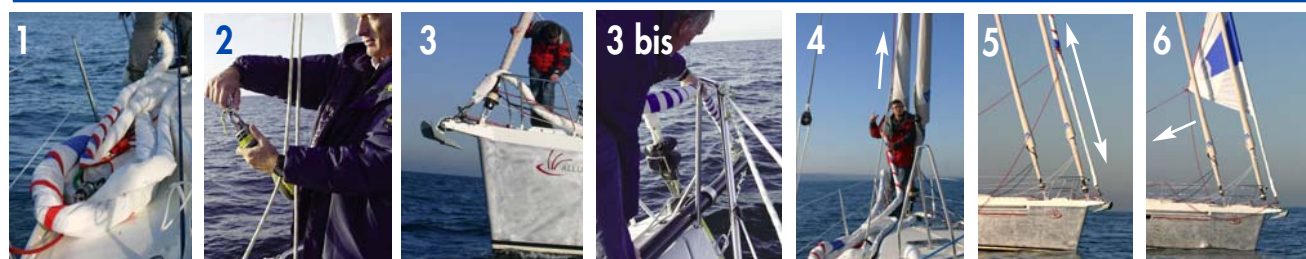
E – HOISTING

- (1) After attaching the sail to the furler install the whole system on the deck as shown on the picture below;
- (2) Fit the swivel onto the halyard and the drum onto the chain plate (3) or bowsprit (3 bis). Then push the bowsprit forward (3 bis).
- (4) Check that the halyard is clear. Hoist the sail until the swivel is at the mast head level.



F – FURLING OUT

- (5) Tighten the halyard. Check the used rotating direction of the drum to unfurl (see chapter D).
- (6) First tighten the sail sheet and pull furling the line in the right way. Then pull the leeward sheet while controlling the furling line (for help use first the furling line before pulling the sheet).

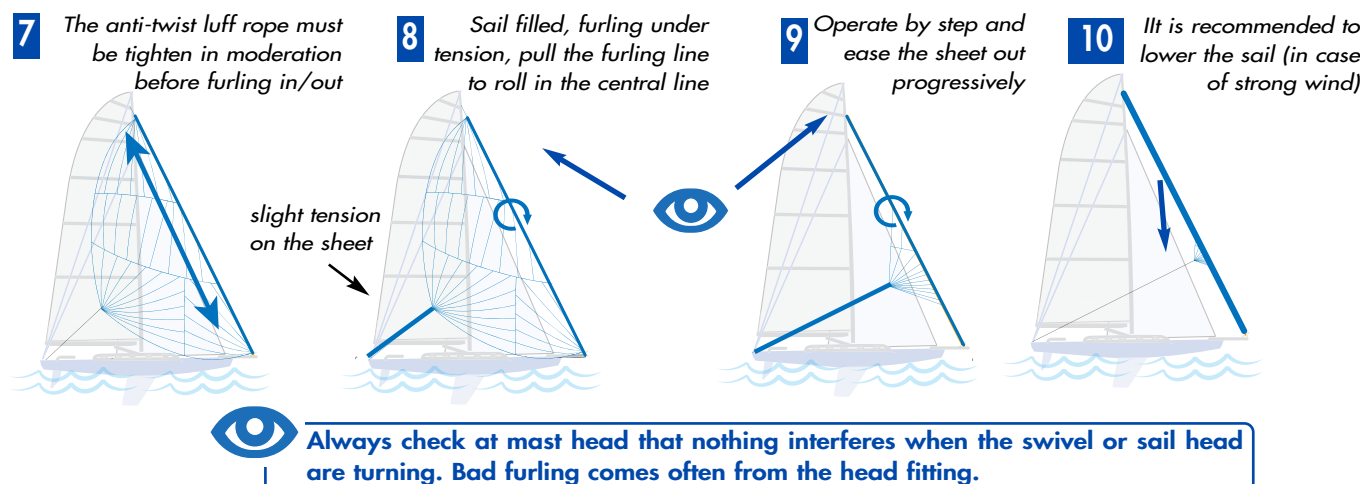


G – SAIL TO USE

- Strictly follow sailmaker instructions (range of use). Always anticipate.

H – FURL IN (Gennaker not fluttering)

- (7) Tighten the anti-twist luff rope in moderation. If necessary reduce the sail power by bearing away. However, the Gennaker must not flutter. Notice the way for furling in (see Chapter D).
- (8,9,10) Keep the sail filled, furl 1/3 of the sail, then ease out little sheet, carry on furling in so progressively until the sail is fully furled in.
- Always keep the furling line under tension. The twist of the luff rope should not make the drum turn backwards as sail rolls may turn in the opposite directions.
- Please note that the central line needs to be first rolled before the sail starts furling in.



I – PRECAUTIONS AND MAINTENANCE :

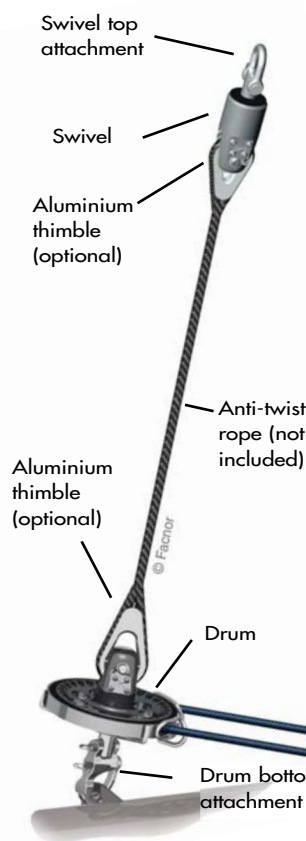
- Furlers do not require any particular maintenance. Just clean regularly the furler with fresh water (warm if possible)
- Do not apply any solvent, lubricating nor chemical products on the rubber ring of the continuous line drum. Use only soapy water if necessary and carefully rinse after.
- Central furling rope: change it before any sign of damages or change it at least every two years (please contact the closest Facnor dealer)



Please do not hesitate to contact Facnor sales team (info@facnor.com) or agents if you have any queries



Installation instructions (P1&2) & User instructions (P3 & 4)



1. BOX CONTENT (to be checked upon reception) Standard kit



+



+



+ 2 Types of attachments (top+bottom): depending on the furler model, the following attachments are included in the standard kit.

Model	FX 900	FX 1500	FX 2500	FX/FXT 4500	FX/FXT 7000	FX 12000	FX 20000
Bow shackle	x 1	x 1	x 1	x 1	x 1	x 1	x 1
Textile shackle	-	-	-	Option available	x 1	x 1	x 1
Textile shackle	x 1	x 1	x 1	x 1	Option available	-	-

		+ Options						
Options / Furling models	ø & length. / Model	FX 900	FX 1500	FX 2500	FX/FXT 4500	FX/FXT 7000	FX 12000	FX 20000
Spliced furling line* (eye/eye) <small>*depending on the furler model, the following spliced furling line can be included as option</small>	ø 6 1/4	x 12 m (39') x 16 m (52')	x 12 m (39') x 16 m (52')	-	-	-	-	-
	ø 8 5/16	-	-	x 16 m (52') x 20 m (65')	x 16 m (52') x 20 m (65')	-	-	-
	ø 10-12 13/32 - 1/2	-	-	-	-	x 32 m 105'	-	-
	ø 12-14 1/2 - 9/16	-	-	-	-	-	Length on request	Length on request
(FX only)								
Stainless steel thimble		-	-	Option available	Option available	-	-	-
Aluminium thimble		-	-	-	-	Option available	Option available	Option available
Extra block (for 2-to-1 swivel or drum)		-	-	Option available	Option available	Option available	Option available	Option available
Friction block		-	Option available	Option available	Option available	Option available	-	-



2. ORIENTATION AND FIXATION OF THE FURLING GUIDE

1 : ORIENTATE THE FURLING GUIDE AND SPOT

Fit temporarily the bottom attachment on the chain plate.
Spot how the furling guide needs to be orientated to enable correct furling in and out.

2: MARK

Mark underneath the guide in which holes you will screw.

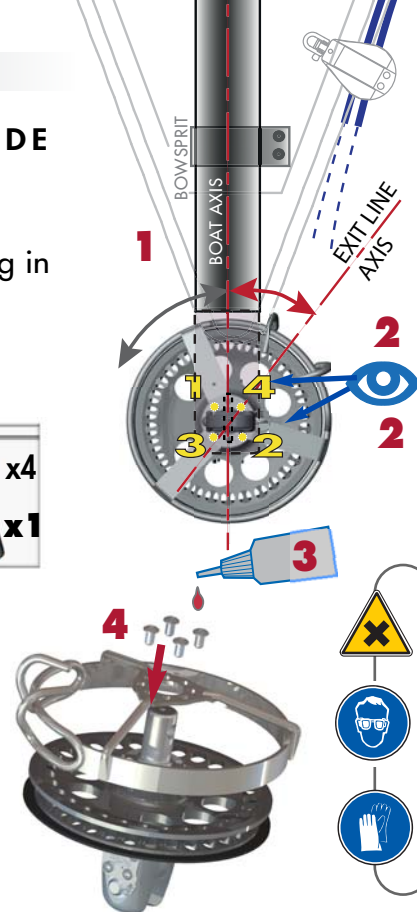
3: PREPARE THE FURLING LINE GUIDE

Remove grease with an appropriate product from the thread of the screws and from the holes. Put a few drops of supplied glue round the thread of each provided screws.

4: FIX THE FURLING GUIDE



Introduce the 4 screws into the previously marked holes and quickly tighten.
Remove any residual glue.



Warning: Operate in a ventilated place. Protect your skin and eyes (in case of contact with the provided products, please follow instructions stipulated on notes enclosed). These products can be irritant, toxic and polluting. Throw away any packaging in an appropriate place.

3. INSTALLATION OF TEXTILE SHACKLE

REMOVE GREASE



ALIGN



GLUE



SCREW



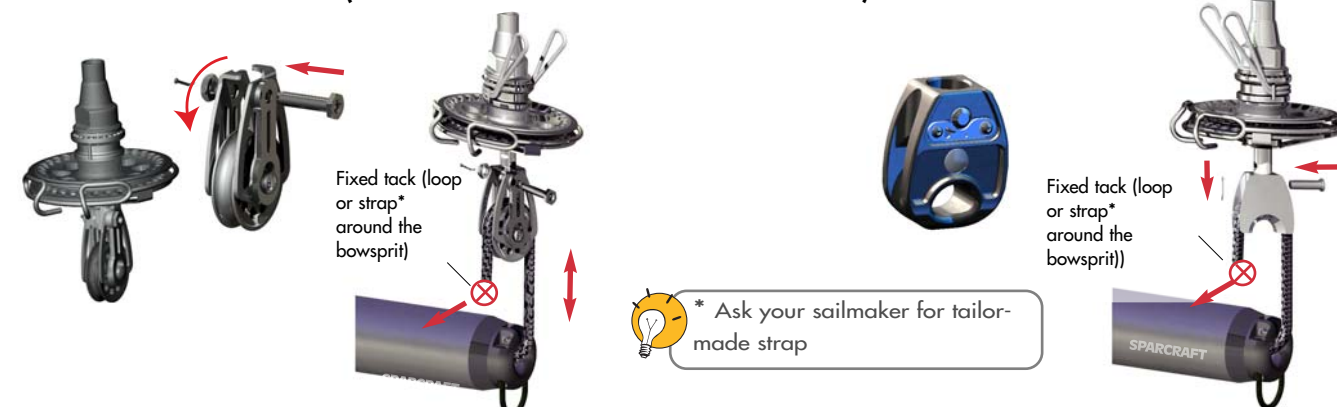
SECURE



4. CALCULATION OF LUFF ROPE AND INSTALLATION RESTRICTIONS:

Please refer to separate Facnor AsymFX technical sheets.

5. BLOCKS FITTINGS (SHEAVE OR FRICTION VERSIONS) :



6. EYE/EYE FURLING LOOP :



USING AND FITTING THE FURLING LINE (FX models)

The Facnor hook device allows to quickly release the spliced furling line from the drum. This clever system is mainly fitted with a stainless steel guide and a rubber ring. With this concept designed by Facnor the furling line can be left fitted on the deck. Available identically on both Gennaker (FX) and asymmetric Spinnaker furlers (Asym-FX). (see opposite : FX)

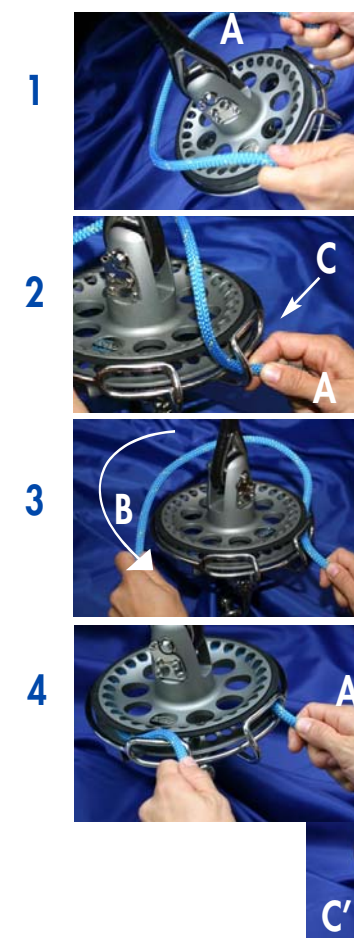
A – USING AND FITTING THE FURLING LINE:

1 - 2 - Position the continuous furling line round and above the drum. Put the A part of the furling line between the right hook (C) and slide the line under the hook on the right hand side.

3 - 4 - Pull the B part of the furling line to progressively introduce the line underneath the rubber ring until to reach the left hook.

5 - 6 - Put down the B part of the furling line and slide the B part of the furling line underneath the left hooks (C').

7 - The line runs through both guide exits. It is now ready to use.



B – EASY ORIENTATION OF THE FURLING GUIDE

9 - The stainless steel guide can be adjusted in order to correctly orientate the furling line according to the chain plate attachment. (see installation instructions, page 2).



C – REMOVING OR FITTING THE WIRE TERMINAL ONTO THE DRUM AND SWIVEL

FX 900 et 1500 models : split pin fitting.

Other models : To remove the wire terminals (thimbles) from the drum or swivel, remove the captive pin : push the spring (pict 10 & 11) and pull the pin. The jaws are now accessible.

To fit the pin back : just push the pin ONLY until the spring "clicks" (no need to touch the spring). The pin is now safely fixed.



Except from FX 900 & 1500 models

D – INSTALLATION ADVICE BEFORE USE

- Protect the sail against UV and sea water;
- Anticipate foredeck handling. Secure yourself to the boat by a tether line;
- Before hoisting check that the asymmetric Spinnaker furler is clear of any other halyards and lines;
- See with your Facnor dealer how to fit, tighten and block the furling line.



For the good functioning of the anti-twist luff rope, furl and unfurl always in the same way (clock wise or anti-clockwise). You can mark the furling line or use a winch block.